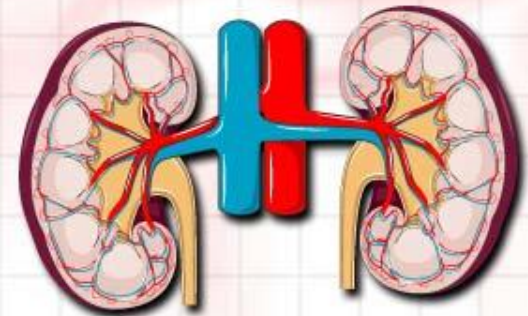
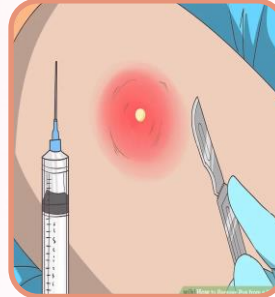


# Urinary System

## Module 5



# Urinary System Structures



**glomerulus**

**glomerul/o**

**Part of the kidney involved in filtering of blood to form urine**

**meatus**

**meat/o**

**opening for urine to exit the body**

**azot/o**

**urea, nitrogen; waste product eliminated in urine**

**hemat/o**

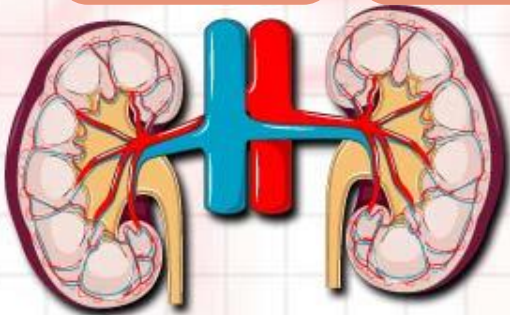
**blood**

**py/o**

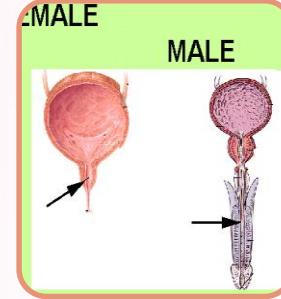
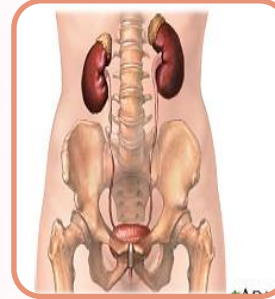
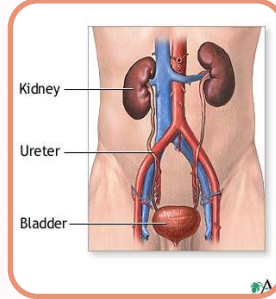
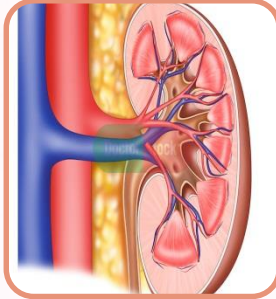
**pus**

**son/o**

**sound**



# Urinary System Structures



**kidney(s)**  
**nephro**  
**reno**  
removes  
waste  
from  
blood

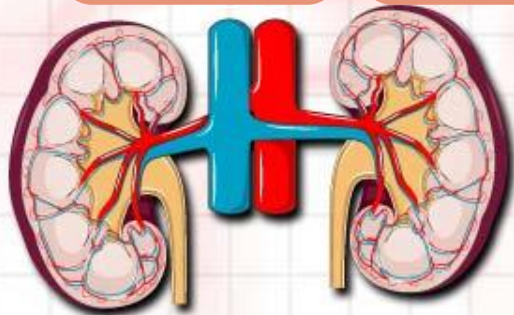
**renal  
pelvis**  
**pyelo**  
collects  
urine and  
passes to  
ureter

**ureter**  
**ureter/o**  
carries  
urine from  
kidneys to  
bladder

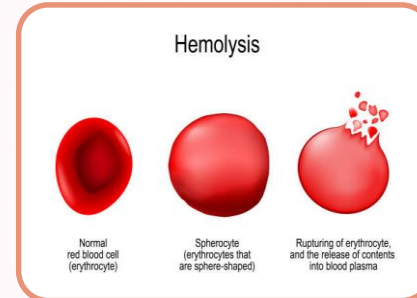
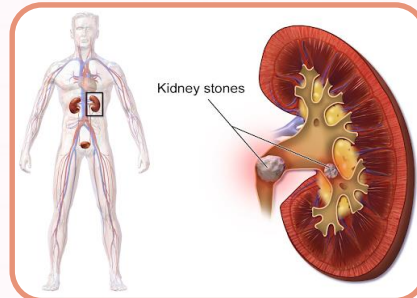
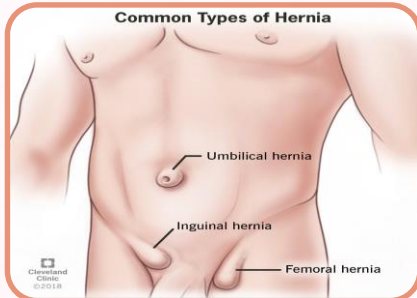
**bladder**  
**cyst/o**  
**vesic/o**  
hollow  
organ that  
holds  
urine

**urethra**  
**urethr/o**  
passes  
urine from  
bladder to  
outside  
the body

**urine**  
**urin/o,**  
**ur/o, -uria**  
liquid  
waste  
produced  
by the  
kidneys



# Related Suffixes...



**-cele**

**protrusion,  
hernia**

**-lithiasis**

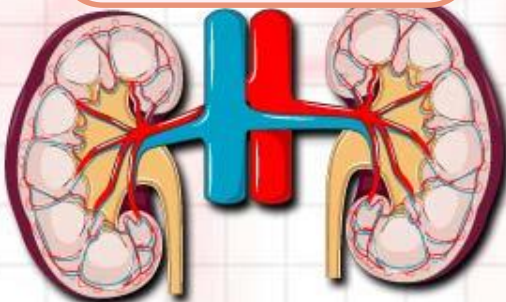
**condition of  
stones**

**-lysis**

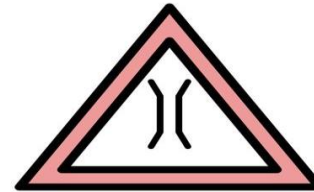
**destruction**

**-ostomy, -  
stomy**

**creating an  
artificial  
opening**



# Related Suffixes...



**-scope**

**instrument  
used for  
viewing**

**-scopy**

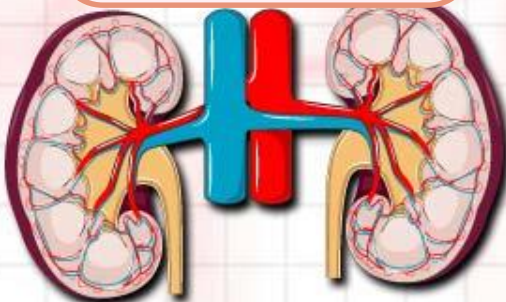
**process of  
visual  
examination**

**-stenosis**

**narrowing**

**poly-**

**many, much**



# Now Can You Define These Terms?

**urinary**

**vesical**

**nephroma**

**ureteroplasty**

**dysuria**

**urology**

**cystitis**

**nephritis**

**cystotomy**

**anuria**

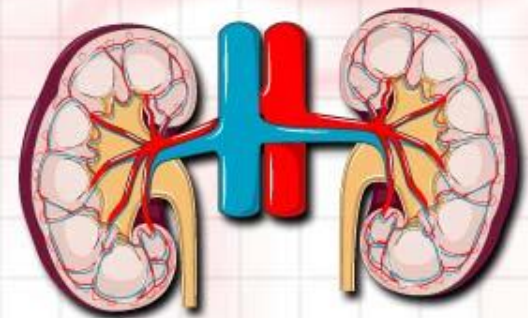
**ureterostenosis**

**urethalgia**

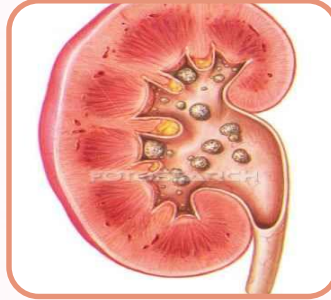
**pyelitis**

**renal**

**urethritis**



# What Can Be Found in the Urine?



**albumin**  
**albumin/o**  
type of protein

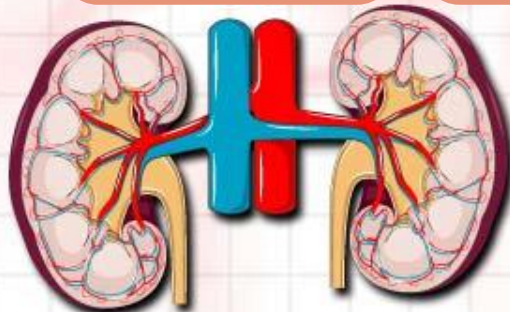
**sugar**  
**glyc/o,**  
**glycos/o**  
glucose; in urine sign of diabetes

**stone(s)**  
**lith/o, -lith**  
form in the kidney and travel through urinary system

**terms that refer to stone(s)**  
**calculus,**  
**calculi (pl)**

**waste product**  
**urea**  
physicians use to diagnose kidney disorders

**Note: -uria means urine**



# Urinary System Diagnostics

- UA
- ua

**urinalysis**

**KUB**

- kidneys –  
ureter –  
bladder

- intravenous  
pyelogram
- **-gram** =  
record, image

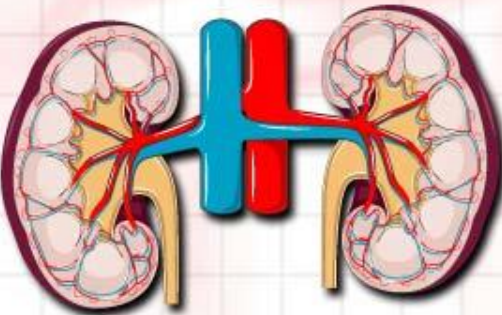
**IVP**

**cath**

- catheter;  
catheterization

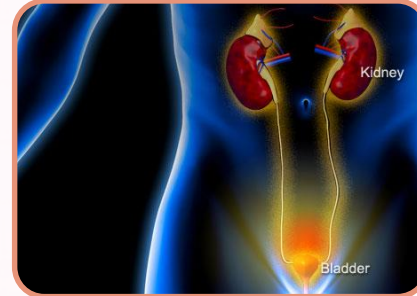
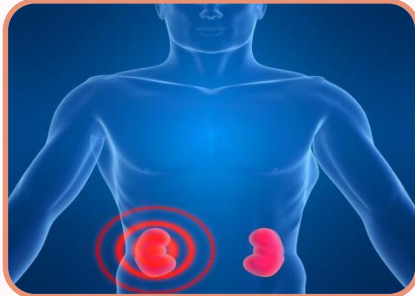
**a special x-ray  
exam of the  
kidney, bladder,  
and ureters**

**a flexible tube  
inserted into  
the bladder to  
drain urine**





# Urinalysis Results...



**acute renal failure**

**ARF**

**sudden kidney failure**

**chronic renal failure**

**CRF**

**loss of kidney function slowly over time**

**urinary tract infection**

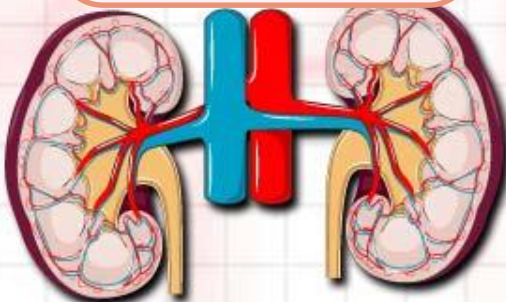
**UTI**

**bacterial infection of bladder or urethra**

**blood urea nitrogen**

**BUN**

**test done to see how well kidneys are working**



# Pathology of Urinary System

- **micturition, voiding**
  - urination, excretion of urine from the body



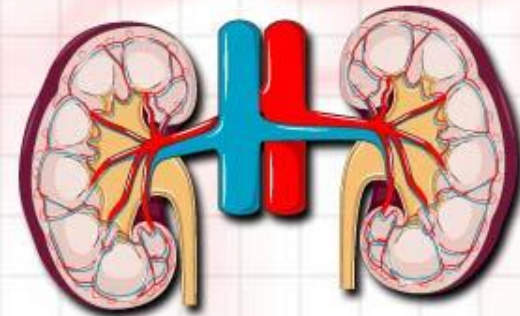
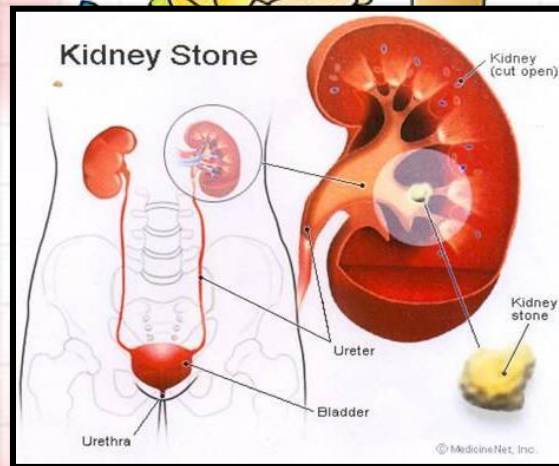
- **incontinence, enuresis**
  - involuntary urination
  - inability to control excretory functions

• **olig/o = scanty; few; very little**

- oliguria?
  - *very little urine produced or excreted*

• **cystolithotomy?**

- *surgical incision to remove stone from the bladder*

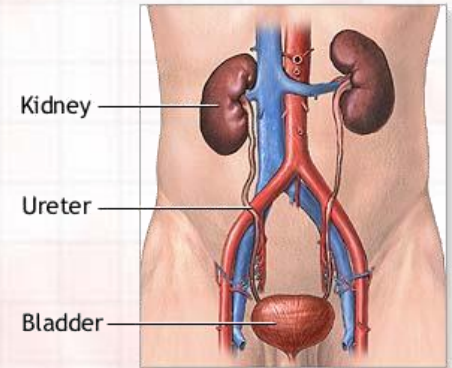


# Pathology of Urinary System



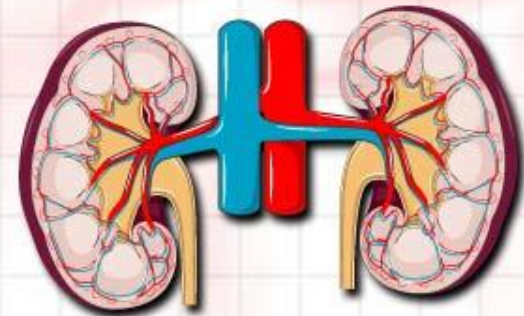
- **noct/o = night**
  - nocturia?
    - *excessive urination at night*

- **uremia**
  - *blood in the urine*



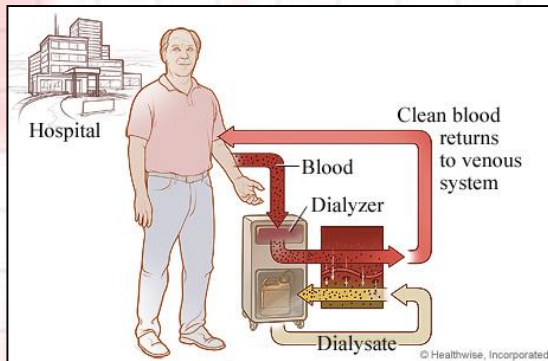
- **-ptosis = drooping, sagging, floating**
  - nephroptosis?
    - *drooping, sagging, “floating” kidney*

- **-pexy = surgical fixation**
  - nephropexy?
    - *surgical fixation of a floating kidney*



# Pathology of Urinary System

- **-tripsy** = **surgical crushing**
  - nephrolithotripsy? (nef-row-LITH-o-trip-see)
    - *surgical crushing of a stone in the kidney*



## hemodialysis

- hem/o = blood
  - dia = through
  - **-lysis** = **breaking down; destruction**
- 
- **diuretic**
    - **agent that increases the amount of urine**

