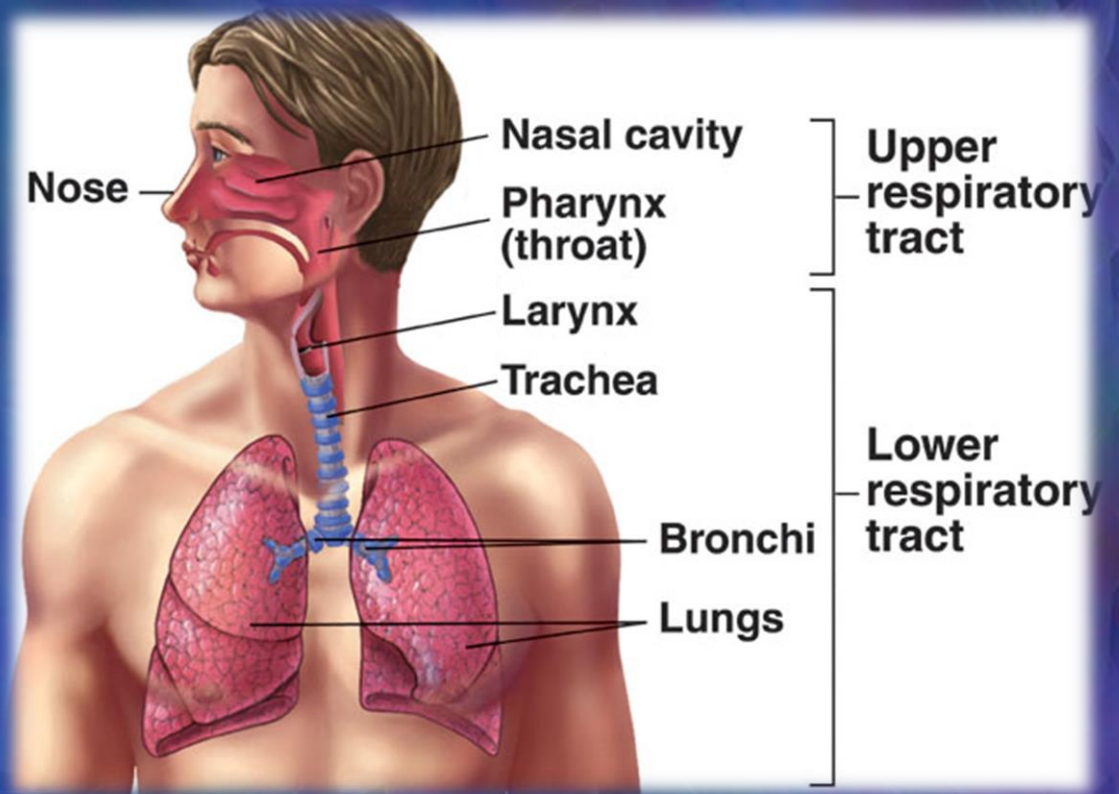


# Respiratory System



# Respiratory Pathology

## COPD

- chronic obstructive pulmonary disease
- used to describe airflow limitations

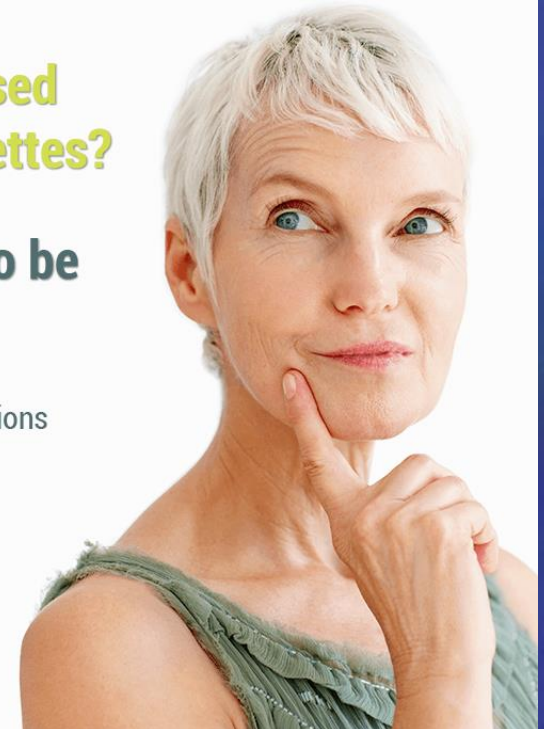


**Q** Is COPD only caused by smoking cigarettes?

**A** No, COPD can also be caused by:

- Childhood respiratory infections
- Dust & chemicals
- Secondhand smoke
- Air pollution
- Heredity

LungInstitute.com

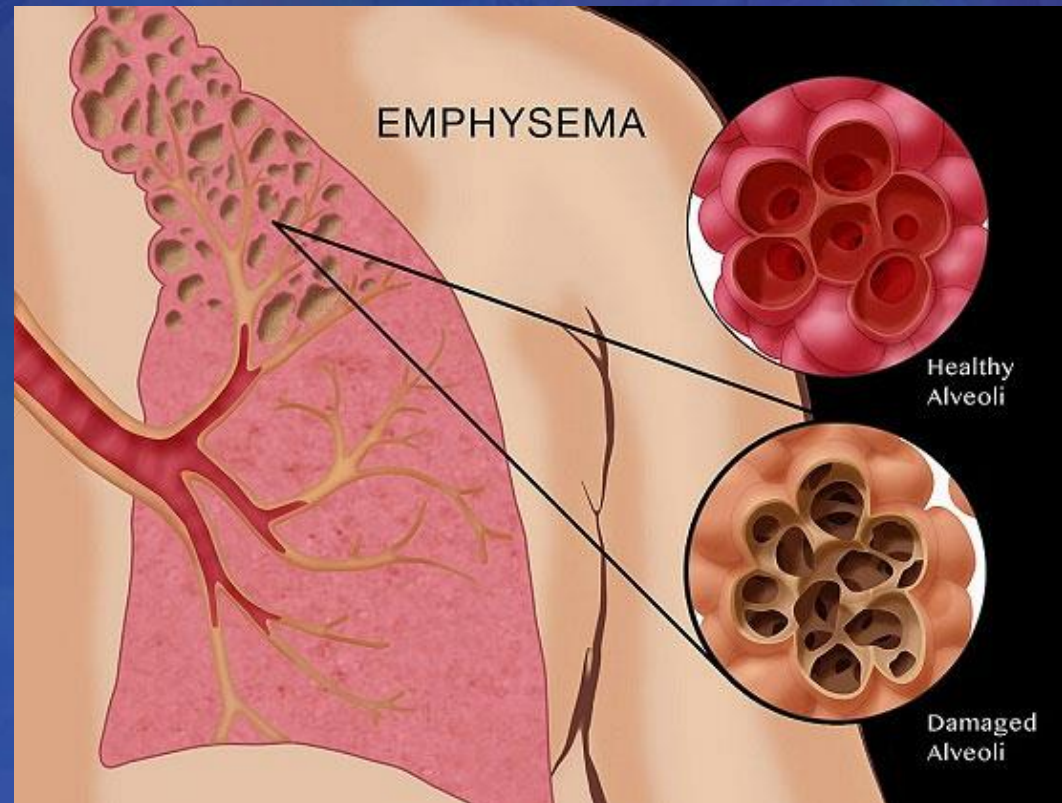




# Respiratory Pathology

## emphysema

- condition of alveoli being damaged and enlarged causing shortness of breath



# Respiratory Pathology

## **obstructive sleep apnea**

- condition of repetitive pharyngeal collapse during sleep which leads to absence of breathing



**ASA**  
American Sleep Association®

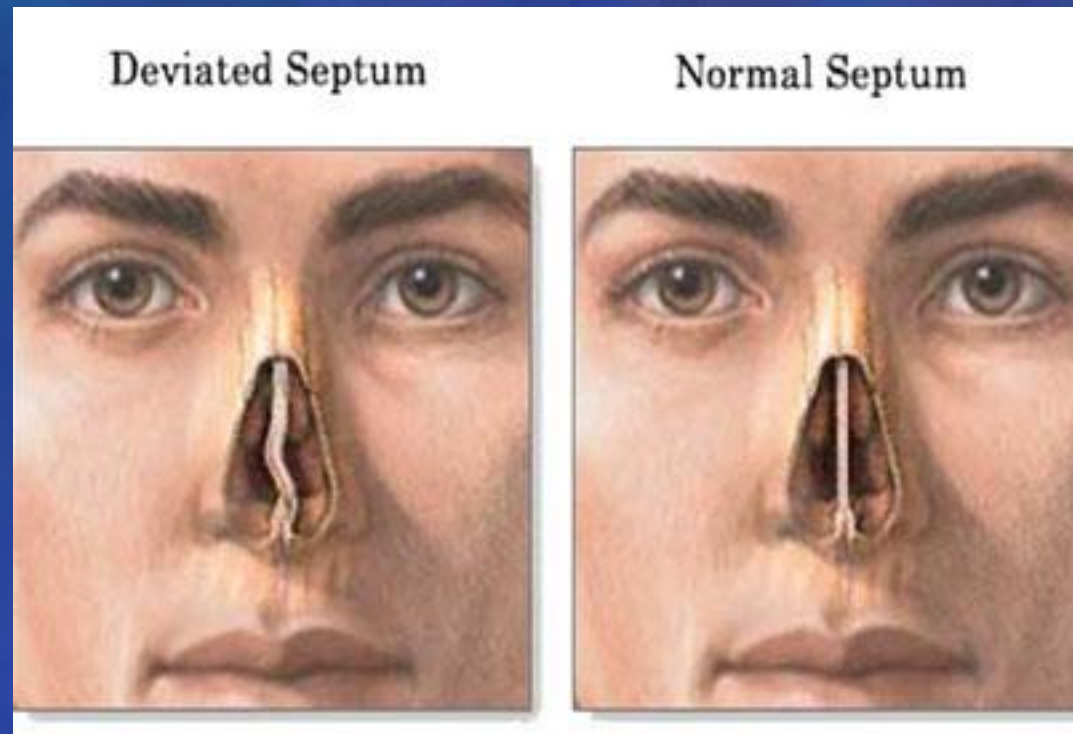
**SYMPTOMS OF OBSTRUCTIVE SLEEP APNEA**

- Snoring**: Icon of a person sleeping with 'ZzzZzz' above them.
- Excessive Daytime Sleepiness**: Icon of a bright sun.
- Gasping or choking during sleep**: Icon of a person's face with a wide-open mouth and a distressed expression.
- Dry mouth or sore throat in the morning**: Icon of a glass of water with bubbles.
- Morning headache**: Icon of a sun partially obscured by a blue cloud.
- Witnessed pauses in breathing during sleep**: Icon of a pair of lungs with a vertical bar indicating a pause in breathing.

# Respiratory Pathology

## deviated septum

- one part of the nasal cavity is smaller due to malformation of injury of the nasal septum





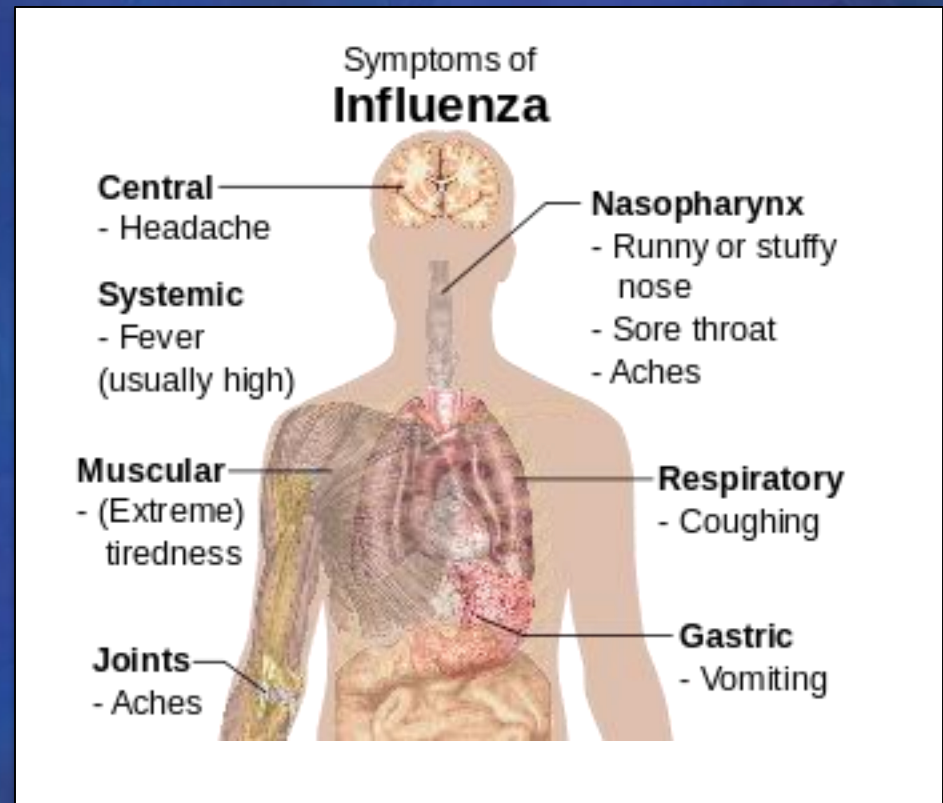
# Respiratory Pathology

## asthma

- allergic disorder characterized by breathing difficulty

## influenza

- the flu
- contagious viral respiratory infection



# Respiratory Pathology

## SIDS

- sudden infant death syndrome



*Reduce the  
risk of SIDS*

# Respiratory Pathology

**CF** = cystic fibrosis

- passed down in families
- thick, sticky mucus build up in lungs & digestive system
- most common with children and young adults
- life threatening; average life span about 37 years



## Did You Know?

Cystic fibrosis is sometimes called "65 roses." The nickname came from a little boy who overheard his mom talking about the condition on the phone. He thought that each time his mom said "cystic fibrosis," she was talking about 65 roses.

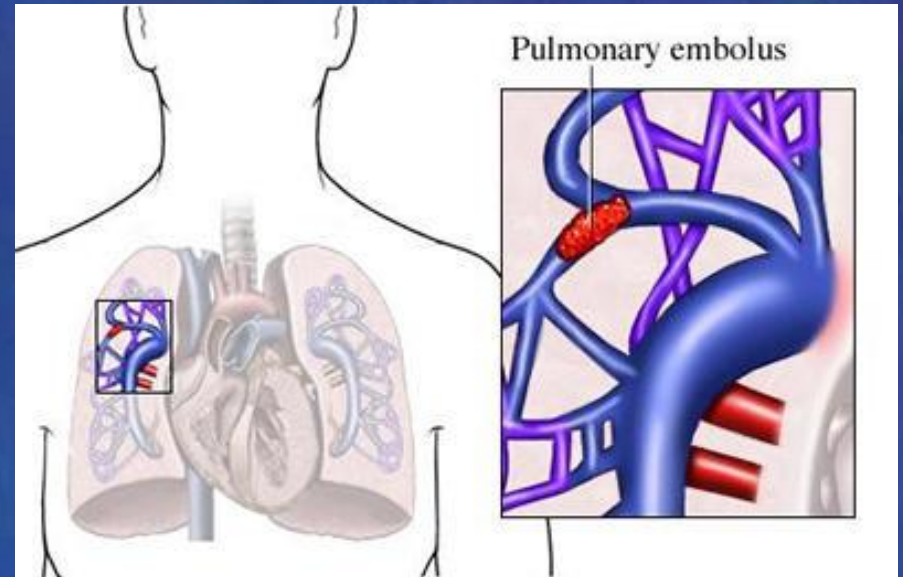




# Respiratory Pathology

**PE** = pulmonary embolism

- blockage caused by blood clots in the lungs
- can be life threatening, but treatable with medications if detected early



# Respiratory Pathology

## URI

- upper respiratory infection
- “common cold”

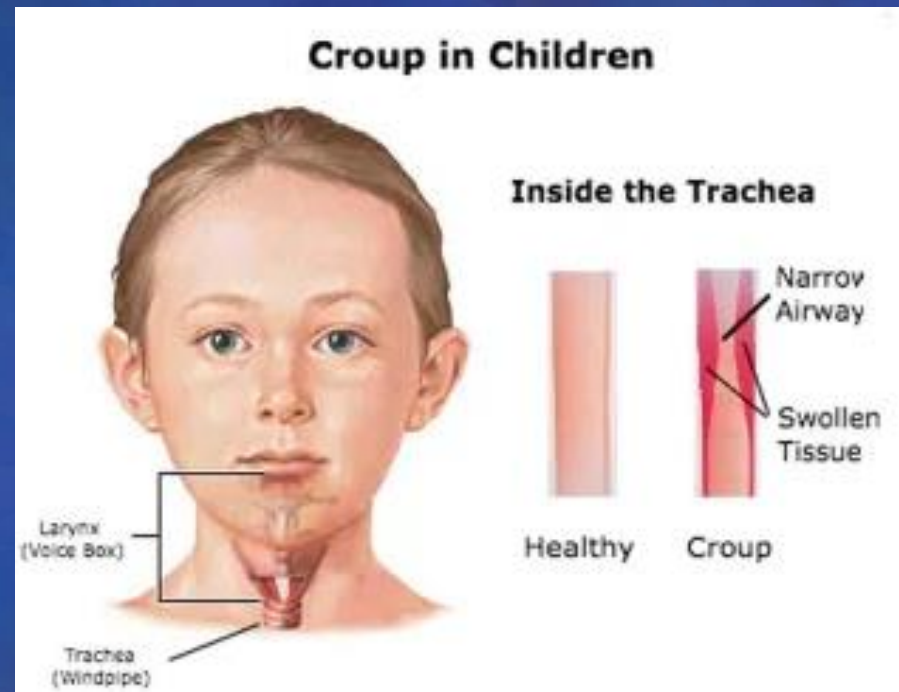
## croup

- inflammation of the larynx, trachea, & bronchi causing a barking cough



## expectorant

- drug that breaks up mucus and promotes coughing to remove it



# Respiratory Pathology

## mucus

- substance secreted

## sputum

- mucus secretions from the respiratory tract expelled through the mouth





# Respiratory Pathology

## hyperventilation

- condition that occurs when someone begins to breathe very fast beyond body needs

## hypoventilation

- condition that occurs when someone begins to breathe too slow and doesn't fill the body's gas exchange needs

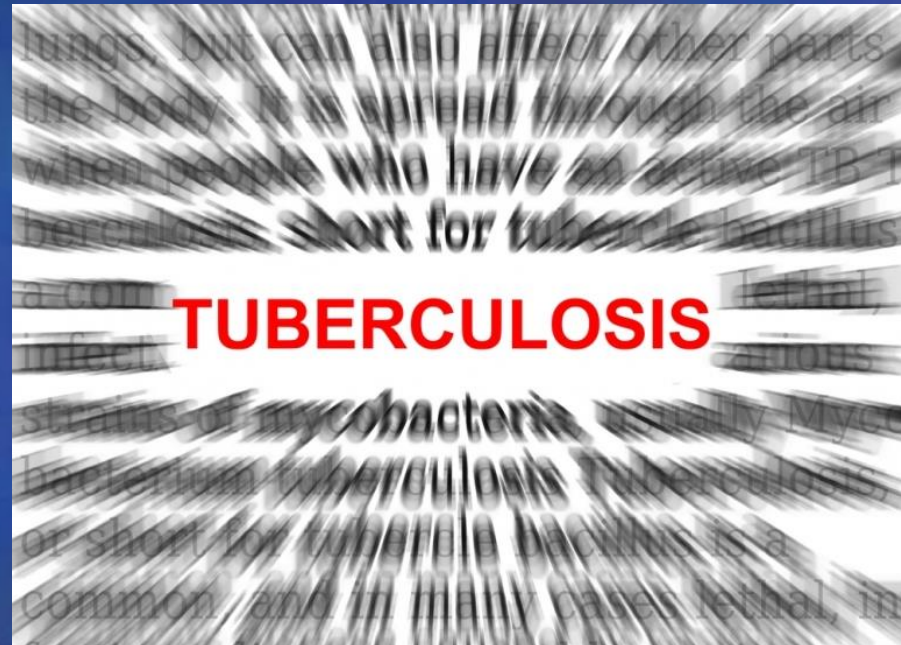


First Aid  
for  
Hyperventilation



# Respiratory Pathology

- **pneumonia**
  - inflammation of lungs where air sacs fill with pus
- **TB**
  - tuberculosis
  - infectious disease that attacks the lungs



# Respiratory Pathology

## aspirate

- to withdraw fluid
- to suction or draw foreign material into the respiratory tract

## asphyxia

- deprivation of oxygen; suffocation



what are other words for aspirate?



draw out, suck out, enunciate, articulate, suction, extract, remove, breathe, suck in, draw in





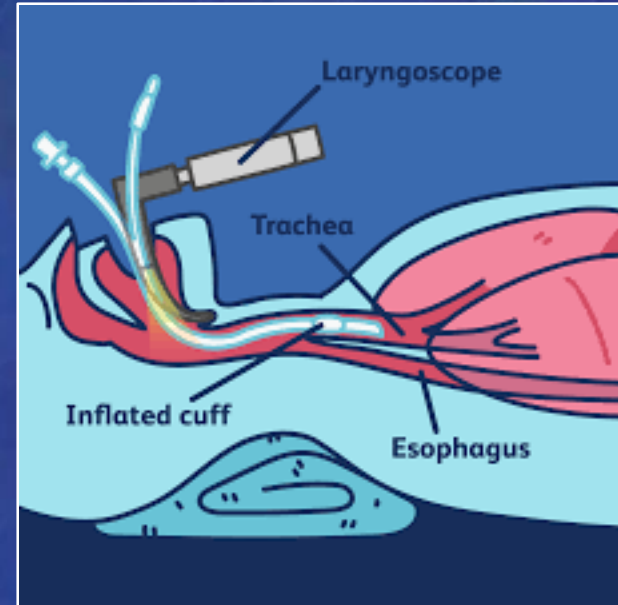
# Respiratory Treatment

## intubation

- insertion of a tube into a hollow organ such as the trachea

## nebulizer

- device that creates a fine spray
- converts liquid into a mist



## ventilator

- mechanical device used to assist with or substitute breathing



# Respiratory Tests

## percussion

- act of tapping a body surface with the fingers to determine density of the part beneath by the sound obtained



## chest radiograph

- x-ray image of the chest used to evaluate the lungs and heart





# Respiratory Tests

- **chest computed tomography**
  - computerized radiographic body slice images

