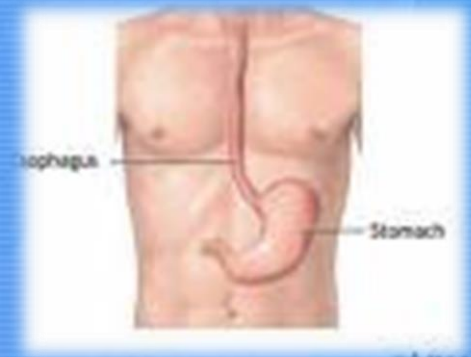
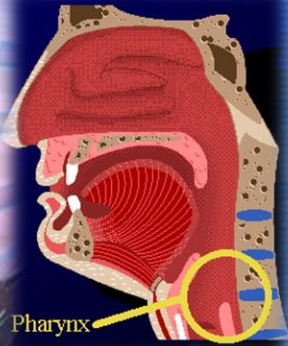


# The Digestive System



# Major Structures

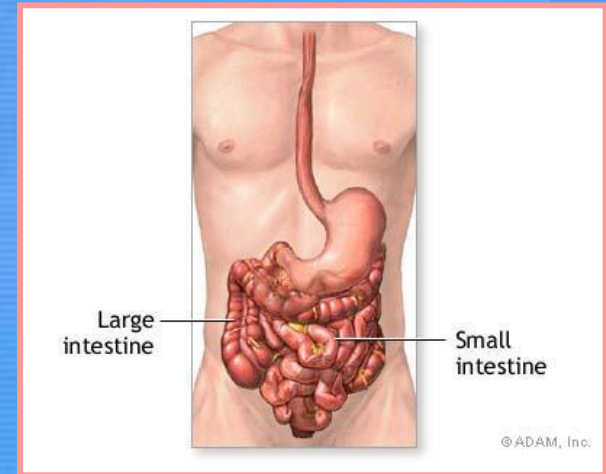
- Oral Cavity
  - or/o and stomat/o = mouth
- uvul/o = uvula
  - soft mass that hangs in back of mouth
- pharynx or pharyng/o
  - throat
- esophagus
  - esophag/o = esophagus
  - -us = noun ending (like -um)
  - transports food from pharynx to stomach
- stomach
  - gastr/o
  - breaks food down and mixes with digestive juices





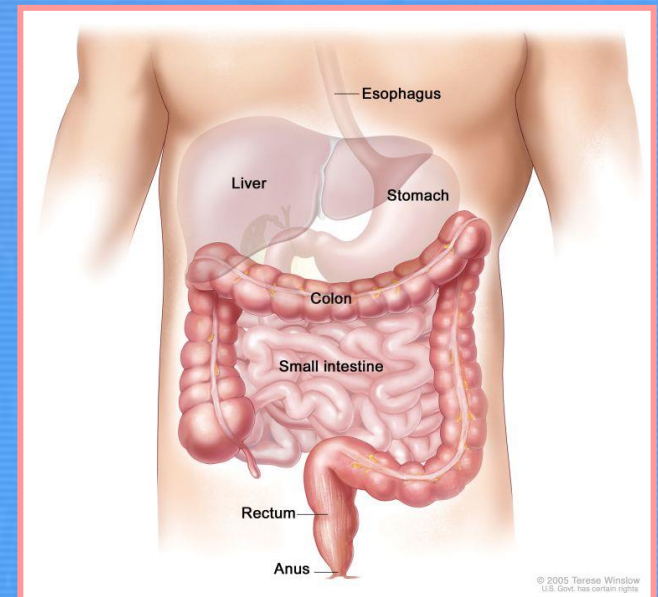
# Major Structures

- **Small Intestine**
  - enter/o
  - completes digestion and absorption of most nutrients
  - ileum = part of small intestine
  - ilium = the hip bone
- **Large Intestine/Colon**
  - col/o or colon/o
  - absorbs excess water and prepares solid waste



# Major Structures

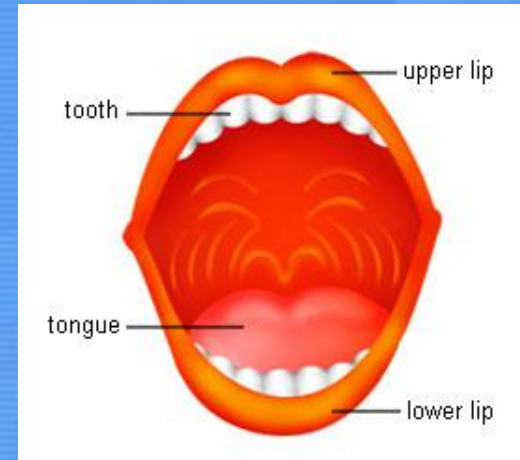
- **Rectum**
  - proct/o and rect/o
  - controls secretion of solid waste
- **Anus**
  - an/o
- **Liver**
  - hepat/o
- **Gallbladder**
  - cholecyst/o
  - stores bile for later use
- **abdomen**
  - lapar/o & abdomin/o
- **peritoneum**
  - periton/o
  - membrane that lines the abdominal cavity





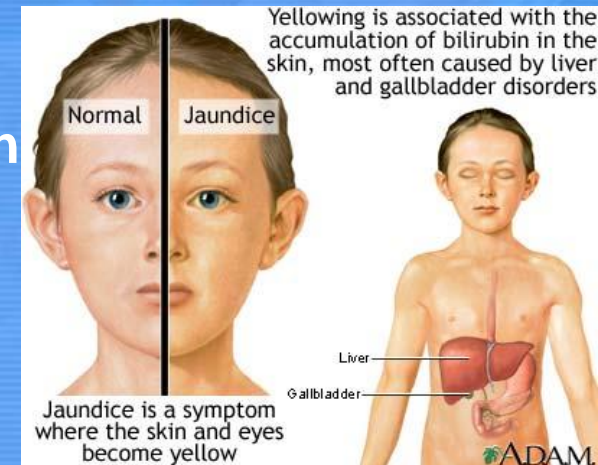
# Oral Cavity

- cheil/o = lips
  - -itis
  - -rrhaphy
  - -oma
- gloss/o = tongue
- lingu/o = tongue
  - -pathy
  - -dynia



# Digestion

- digestion
  - -pepsia & pept/o
  - dyspepsia = painful digestion (indigestion)
- Pyrosis “heartburn”
  - pyr/o = fever, fire
  - -osis = abnormal condition
- water
  - H<sub>2</sub>O
- jaundice
  - Yellow discoloration of the skin
  - Caused by elevated bilirubin levels; liver not functioning properly





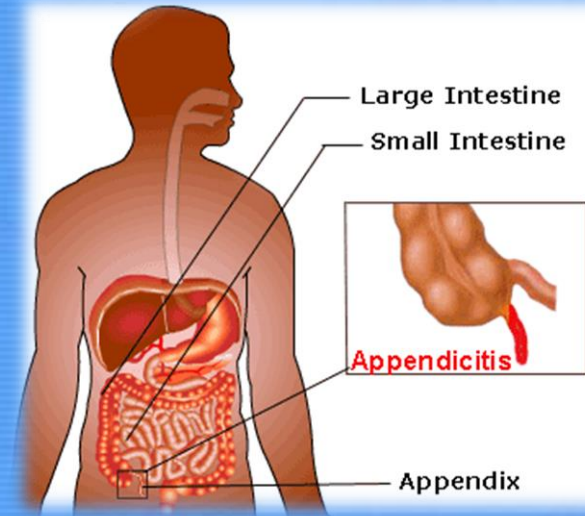
# Pathology

- **gingivitis**
  - inflammation of the gums
  - gingiv/o = gums
- **aphagia**
  - a- = without, no, away from
  - -phagia = swallowing
  - “the loss of the ability to swallow”



# Pathology

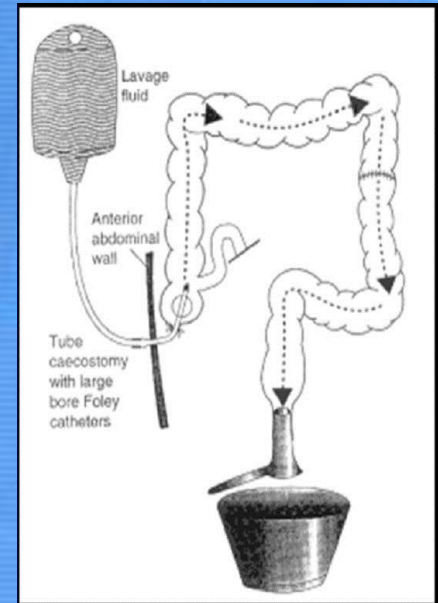
- **append/o**
- **appendic/o**
  - **appendix**
  
- **herni/o**
  - **hernia**
  - **protrusion through the a bodywall**





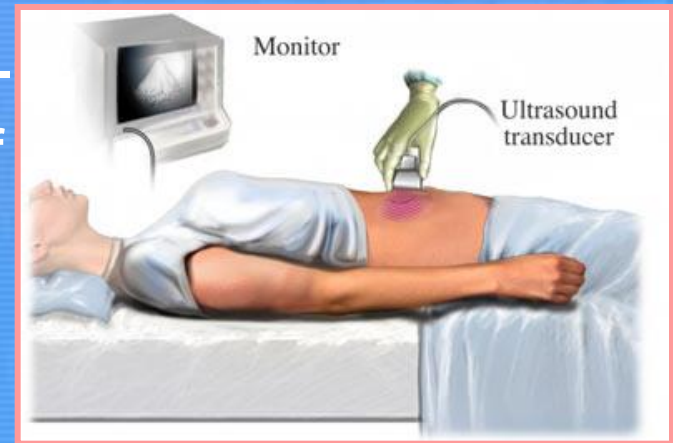
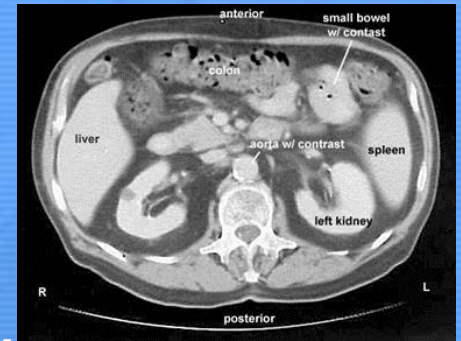
# Pathology (continued...)

- **lavage**
  - to wash out (a body cavity)
- **regurgitate**
  - the return of swallowed food into the mouth
- **emesis or -emesis**
  - **vomiting**
  - expelling the contents of the stomach
- **dysentery**
  - an infection of the digestive system
  - causes severe diarrhea, bleeding, and abdominal pain



# Diagnostic Procedures

- CT or CAT
  - Computed (Axial) Tomography
- Abdominal Ultrasound
  - High frequency sound waves used to visualize internal organs
- Anoscopy (ah-NOS-koh-
  - visual examination of





# Diagnostic Procedures

- **Barium Swallow (Upper GI Series)**
  - Use of barium to see upper portion of digestive system
  - GI = gastrointestinal
- **Enema**
  - Solution placed in rectum and colon to empty the contents via a bowel movement
- **Barium Enema (Lower GI Series)**
  - Use of barium to view lower digestive system



# Treatment Procedures

- **anoplasty**
  - surgical repair of the anus
- **colectomy**
  - surgical removal of all or part of colon
- **colotomy**
  - surgical incision into the colon
- **colonoscopy**
  - visual examination of the colon
- **colostomy**
  - creating an artificial opening to the colon

